



### Positive locking hydraulic cylinder Z2301/...

These very popular HASCO compact hydraulic cylinders have one of the strongest internal locking mechanism available. Contrary to some models available on the market, the locking segments are in contact with the internal cylinder housing rather than the piston rod. Results are amazing; small hydraulic cylinder and very high locking force.

The internal piston rod end positions are monitored by two inductive proximity switches. Conventional mechanical switches using two wires are also available as a special order.

### Groove nut-set Z2311/...

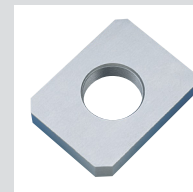
In addition to the flange plate, this component has been added to provide a fine tune adjustment for the positive locking cylinder.

Also, it is now possible to orient inlet and outlet ports at a specific angle.

This is very useful especially when the cylinders are mounted inside the mould or when hydraulic hoses must be join together for serial connections.



Z2311/...



Z2310/...  
Flange Plate



Z2321/...  
Adapter



### Clamping cylinder Z2350/...

This is the latest hydraulic cylinder introduced, which includes clearance screw holes on the width and length for mounting.

They have a key slot already machined for location on the mould, and are an ideal way to move stripper plates or ejector plates mounted on the stationary side of the mould.

### Short stroke cylinder Z236/...

The cylinders have been developed by HASCO for short stroke applications where space is extremely tight.



Z236/...



Z2360/...  
Flange Plate

### Hydraulic accessories

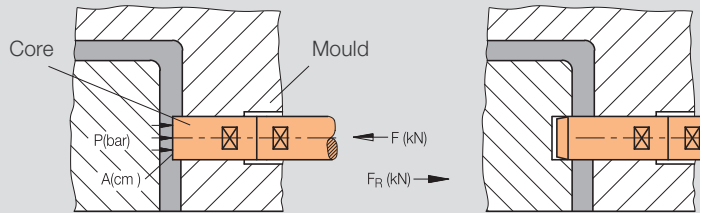
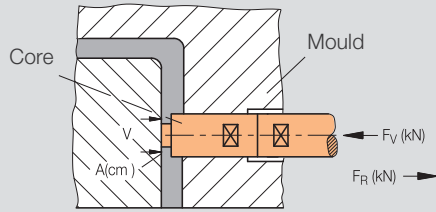
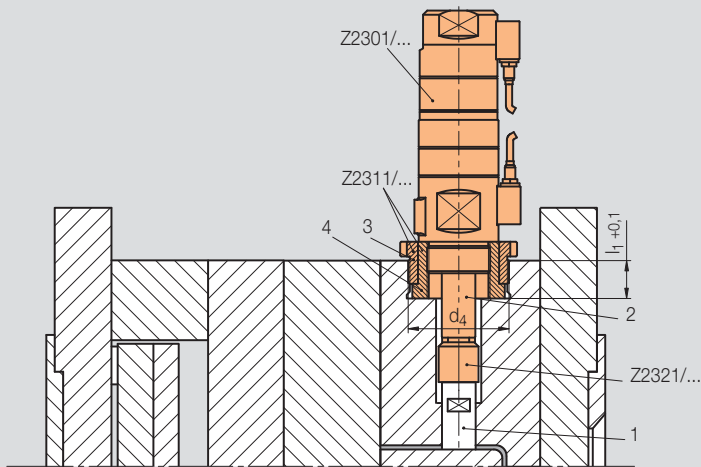
high pressure  
hoses

metric  
coupling

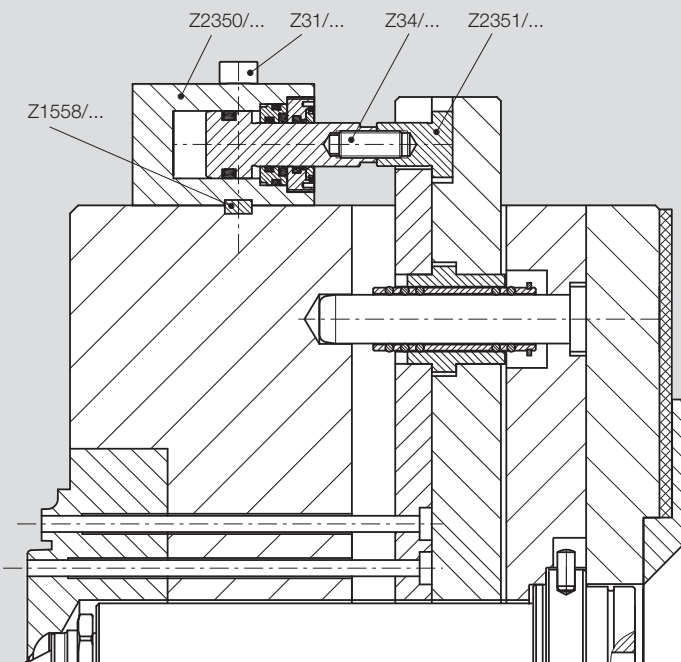


# Mounting examples

## Z2301/...



## Z2350/...



## Z236/...

