

# HASCO®

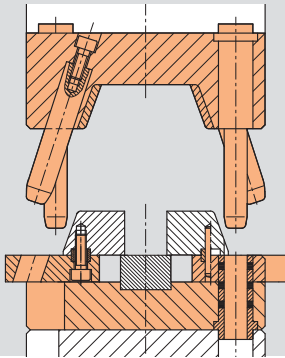
Enabling with System.

Flexible –  
with all possible  
combinations

## K-System

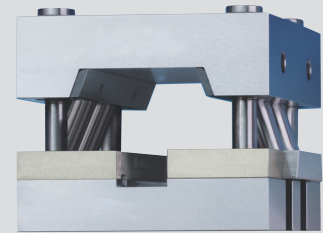
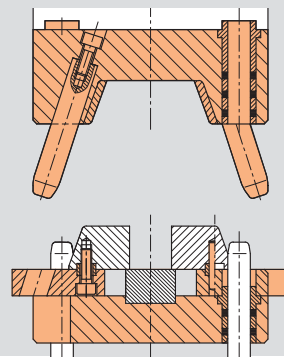
**K 2500 /...**

Split mould kit (Ejector type)



**K 2501 /...**

Split mould kit (Stripper type)



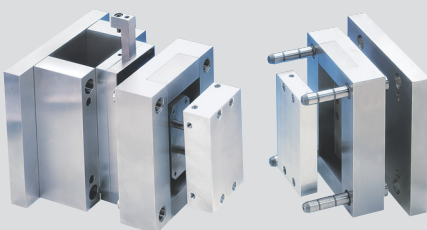
## HASCO Mould Base

the heart of  
modern  
production



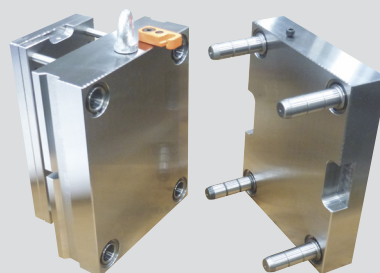
**K 3500 /...**

Quick-change Mould System



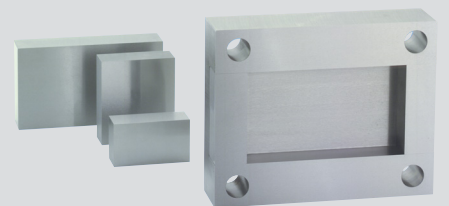
**K 3600 /...**

Small series mould



**KR...**

Insert-Modular System



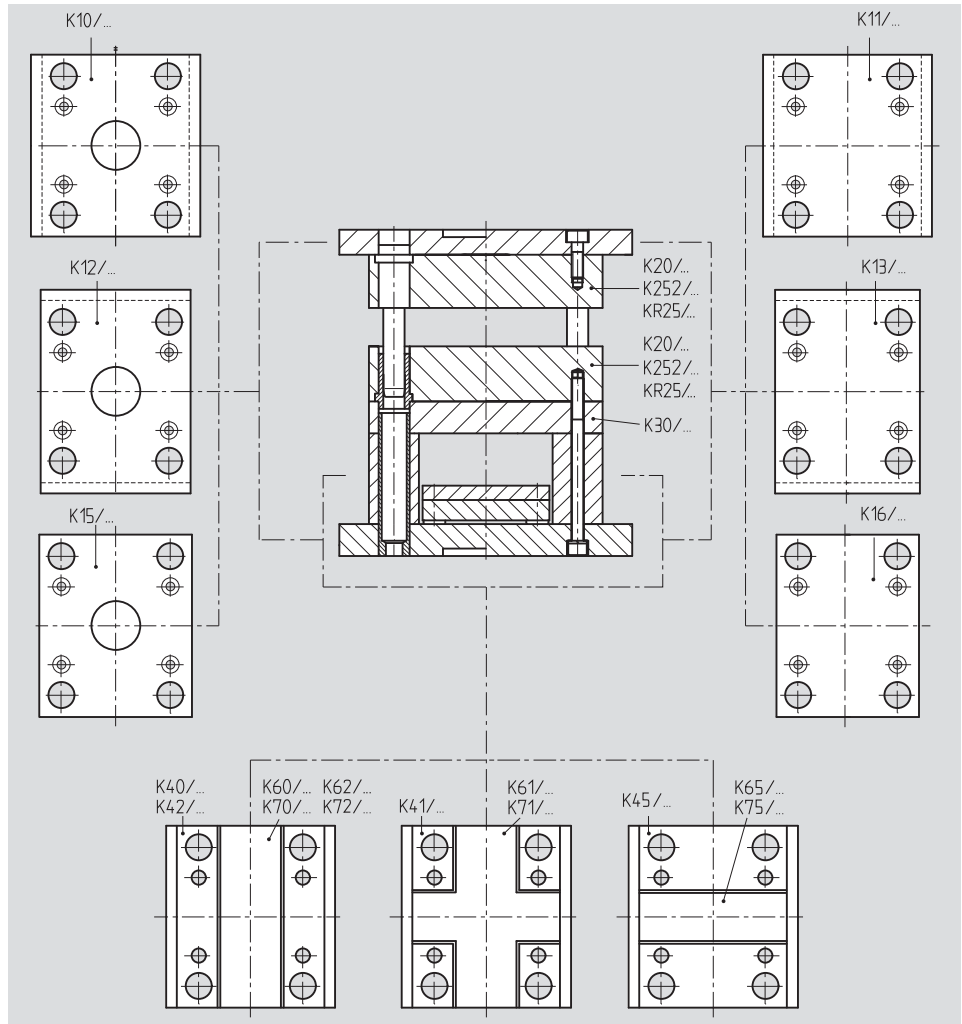
# HASCO K-system in all sizes and combinations

Standard mould base assembly  
with variations of clamping plates  
and risers

Ordering example  
Mould plate

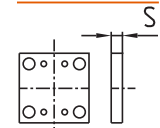
**K20 / 396 x 546 x 136 / 1.2312**

Product No.      Dimensions      Plate thickness      Material No.



## Size range of K-plates [mm]

available in: 1.1730, 1.2162, 1.2764, 1.2767, 1.2083, 1.2085, 1.2311, 1.2312, 1.2343, Toolox33  
other sizes in all available steel grades as customized production



b \ l	095	130	156	196	246	296	346	396	446	496	546	596	656	696	796	896	996	S
095	■																	6
100		■																9
156			◆	■														12
190				◆	■													17
196				■														22
218					◆	■												27
246					■	◆	■											36
296						■	◆	■										46
346							■	◆	■									56
396								■	◆	■								66
446									■	◆	■							76
496										■	◆	■						86
546											■	◆	■					96
596												■	◆	■				116
646													■	◆	■			136
696														■	◆	■		156
746															■	◆	■	176
796																■	◆	196

= **K2500 / K2501**  
 Split mould kits
  = **K3500**  
 Quick-change mould system
 
◆
 = **K3600**  
 Small series mould