

# HASCO®

*Enabling with System.*

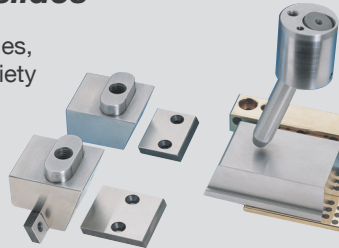
**Standardized  
components  
for individual  
applications.**

## Range of slides

### Z180/... Range of slides

A comprehensive range of slides, risers and sockets offers a variety of combinations and solutions for individual uses.

Injection moulding tools can be manufactured faster at a lower cost.



### Z1880/... Slide modules

Fast calculation and planning through slide modules that are tuned perfectly and are manufactured with the highest level of precision.

The contour slides Z1802/... are available for the formative slide contours in two different materials.



### Z181/..., Z1812/..., Z1813/... Slide units expand constructive opportunities

An individual range of different slide units means that the right product is available for any given situation.

Just as for the Z1812/... – the slide contour can either be directly installed or via a support bracket Z181/... and Z1813/...

The lock ensures that it is held in precisely the right position.

The new HASCO spacer Z1814/... is used for the simple adjustment of the heel block on mould slide units Z1812/... and Z1813/...



### Z1811/..., Z18110/... Inclined sliding carriages for the highest construction safety

Inner undercuts on items can be demoulded in a controlled manner.

#### Z1811/...

A variable angle of inclination up to 20° ensures that demoulding movements take place safely.



#### Z18110/...

The smallest mechanical inclined sliding carriage, without any sprung elements, guarantees reproducible quality with a high level of production safety.



### Z185/... - Z186W/... Risers

A large assortment of risers and flat guides – made from steel or in a low-maintenance design – offers a wide range of combinations.



### Slide safety catches

#### Z1892/..., Z1893/...

For positive and non-positive connections and secure locking of slide weights up to max 36 kg.



#### Z1895/..., Z1896/...

DLC-coated functional elements guarantee secure fixing in the final position – especially with heavy and vertically moving slides.



# Overview of the range, installation and function

