

HASCO®

Enabling with System.

Comprehensive range of products matching with each other, designed to layout cooling circuits for injection moulds and diecasting dies in the most effective way.

Cooling system

Z803 /..., Z804 /... Simple adapter solution from US standard to HASCO standard



- No new fabrication necessary
- Available for 9 and 13 systems
- With valve and open flow
- Flexible adapting

Z80PL /..., Z801PL /..., Z857PL /..., Z876PL /... – Simple and rapid installation of cooling equipment with the patented HASCO Push-Lok system



- Low installation costs
- Rapid repairs, directly on the workbench
- No hose clips etc. required any more
- Inflow and outflow immediately recognisable on the mould
- Hose and couplings perfectly coordinated with each other
- In spite of tight bending radii no change of section

Z810 /... – Connecting nipple with hexagonal socket



- Simple installation by internal hexagonal socket
- No socket spanner required
- Available for 5, 9, 13 and 19 systems
- With open flow

Z825 /..., Z835 /... – No more contamination through leaking medium



- Simple solution for closing open systems with dummy couplings and nipples
- Working safety during storage and transport
- No leakage
- Coordinated to HASCO standard
- Available for 5, 9, 13 and 19 systems

Z976 /... TempFlex metric Z977 /... TempFlex US



- No deep-hole boring and plugging
- No corrosion of the cooling channels
- Adaptable to desired groove process
- 9 series system available in metric and US standard

Z880 /..., Z881 /... – Double sided hose nipple / adapter for lengthening of hoses



- To lengthen hoses
- Time saving through shorter setting-up times
- Hose remnants or short hoses can simply be lengthened
- Available for 5, 9, 13 and 19 systems
- Adapter double sided Z881 /... : Changeover from 5 to 9, 9 to 13 and 13 to 19 systems available

Cooling system

Z900/...

Extension nipple with thread that can be cut as required



- Continuous thread
- Time saving as no thread has to be cut
- Thread punched in steps of 10 mm
- Available for 9 and 13 systems
- With open flow
- Coordinated to usual thread sizes

Z94/...; Z940/...

Shut-off screws with tapered thread and cylindrical



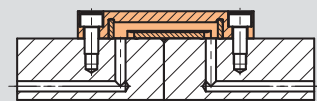
- Intermediate sizes M7x1 and M11x1
- Cooling drill holes of diameters 6 and 10 can be used directly as a core drill hole
- Time saving through elimination of a work step

Z9645/...

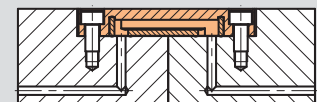
Diverting bridge



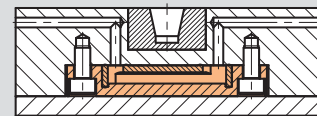
- Ensures tightness even when there are gaps between the plates
- Can be used either raised or sunk
- Elongated hole for variable cooling gauge
- Optimum layout of cooling channels
- Maximum flow cross-section
- Viton® sealed
- Small installation space
- Easy assembly



external, raised



external, counter-sunk



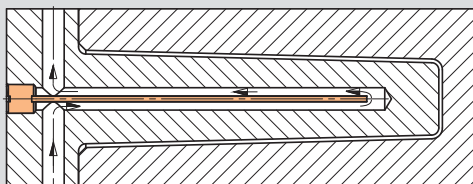
in the mould

Z9661/...

Straight plug baffle with thread



- Small core cooling
- Can be used up to 250°C
- Maximum possible flow cross section
- Resistant to aggressive media
- No swelling
- Positive sealing of thread with sealing agent
- Can be shortened
- Easy installation



Z9662/...

Spiral plug baffle with thread



- Self-centring in the cooling drill hole
- Turbulent flow
- Uniform, homogeneous temperature distribution

In addition to these special features, Z9662/... also offers all the advantages of the Z9661/... straight plug baffle.

